

The Collection and Drainage Division's goal is to locate problem areas, prioritize repairs when required, and maintain the storm and sanitary collection systems in an efficient and cost effective manner.

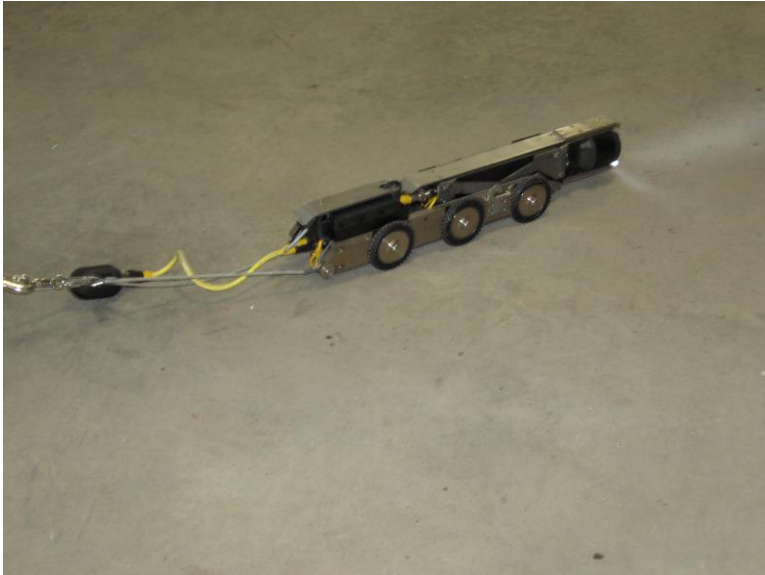


Side entry door leads to the camera operator's station.

All electric power is provided by a tongue mounted generator.



Rear doors open to the camera, camera reel and equipment storage area.



Showing closed circuit TV camera and camera transport



The camera is equipped with a zoom lens and has full pan and tilt capabilities.

The camera transport can elevate when bellies and higher flows are encountered.



Camera transport accessories include an assortment of wheels for various pipe conditions.



Looking inside the camera operator station.



The overhead shelf holds a VHS / DVD recorder and printer.



The operator's desk is equipped with a flat screen monitor full camera, camera transport controls and a laptop computer with docking station.



The center partition has a sliding door and window to the operator's station.

It is also equipped with a flat screen monitor for a camera's eye view from the rear of the trailer.



The camera reel is equipped with 1500' of steel shielded cable providing power to the camera and transport. It also has a remote with full camera and transport controls.



It has a five drawer tool box, sink, wash down gun and various manhole entry accessories, spare parts and tools.