



1459 Washington St.
Muscatine, IA 52761-5040
(563) 263-8933
Fax (563) 263-2127

Public Works

City Transit
263-8152

MEMORANDUM

Equipment Maintenance
Roadway Maintenance
Collection & Drainage
Building & Grounds
Engineering

To: Gregg Mandsager, City Administrator
CC: Fran Donelson, Secretary
FROM: Randy Hill, Public Works Director
DATE: March 13, 2012
RE: Traffic Committee – Historic District Signs

INTRODUCTION:

At the February 28, 2012 Traffic Committee meeting Historic Preservation Commission member, Jane Reischauer, requested the committee's support for the installation of Historic District Signs in the Downtown and West Hill Historic Districts.

BACKGROUND:

The Downtown and West Hill Historic Districts were established in 2006 and 2007 with the assistance of considerable volunteer time and city staff participation. The Historic Preservation Commission believes the community should be proud of the districts being placed on the national register. The signs are similar to the Cultural District signs. The total costs for the signs (\$1,000+) will be paid from private funds.

RECOMMENDATION/RATIONALE:

The purpose of the signs is to define the boundaries of the Historic Districts. Eleven (11) signs will be installed with the assistance of the City's Roadway Maintenance staff. The Historic Preservation Commission would like to have the signs available and installed in May which is "Historic Preservation Month". The Traffic Committee unanimously supports this request and recommends City Council approval.

BACKUP INFORMATION:

1. Sign Profiles
2. Maps of proposed locations for installation
- 3.

"I remember Muscatine for its sunsets. I have never seen any on either side of the ocean that equaled them" — Mark Twain



Iowa Prison Industries - Sign Division

9596.12140.2

Company: Muscatine Historic Preservation Commission
Layout Date: 1/23/2012
Designed By: Akbar Choudry
Substrate: K080ALUM
Punch Spec: See Special Notes.

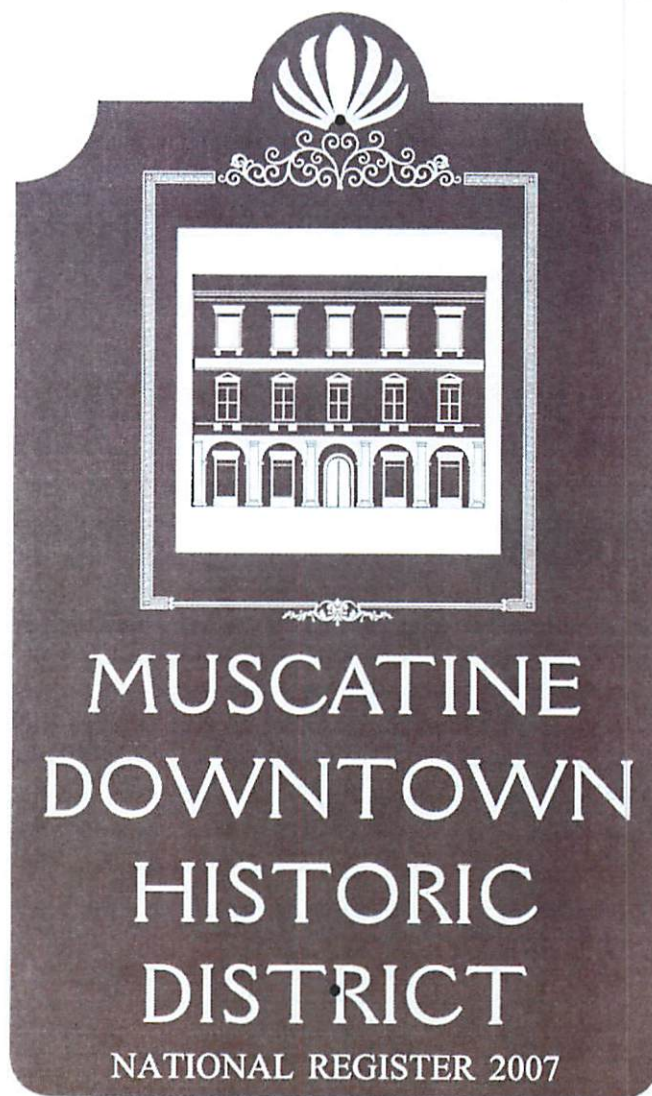
Width: 24"
Height: 40"
Border Width: None
Border Inset: None

Two-Sided: False

Fonts Used: 2-1/8" DellaRobbia BT & 1" Aparajita

Colors Used: White / Brown
Sheeting: KIJWHITEREF, KIJOVERLAMINATE
Special Notes: Pattern Cut.

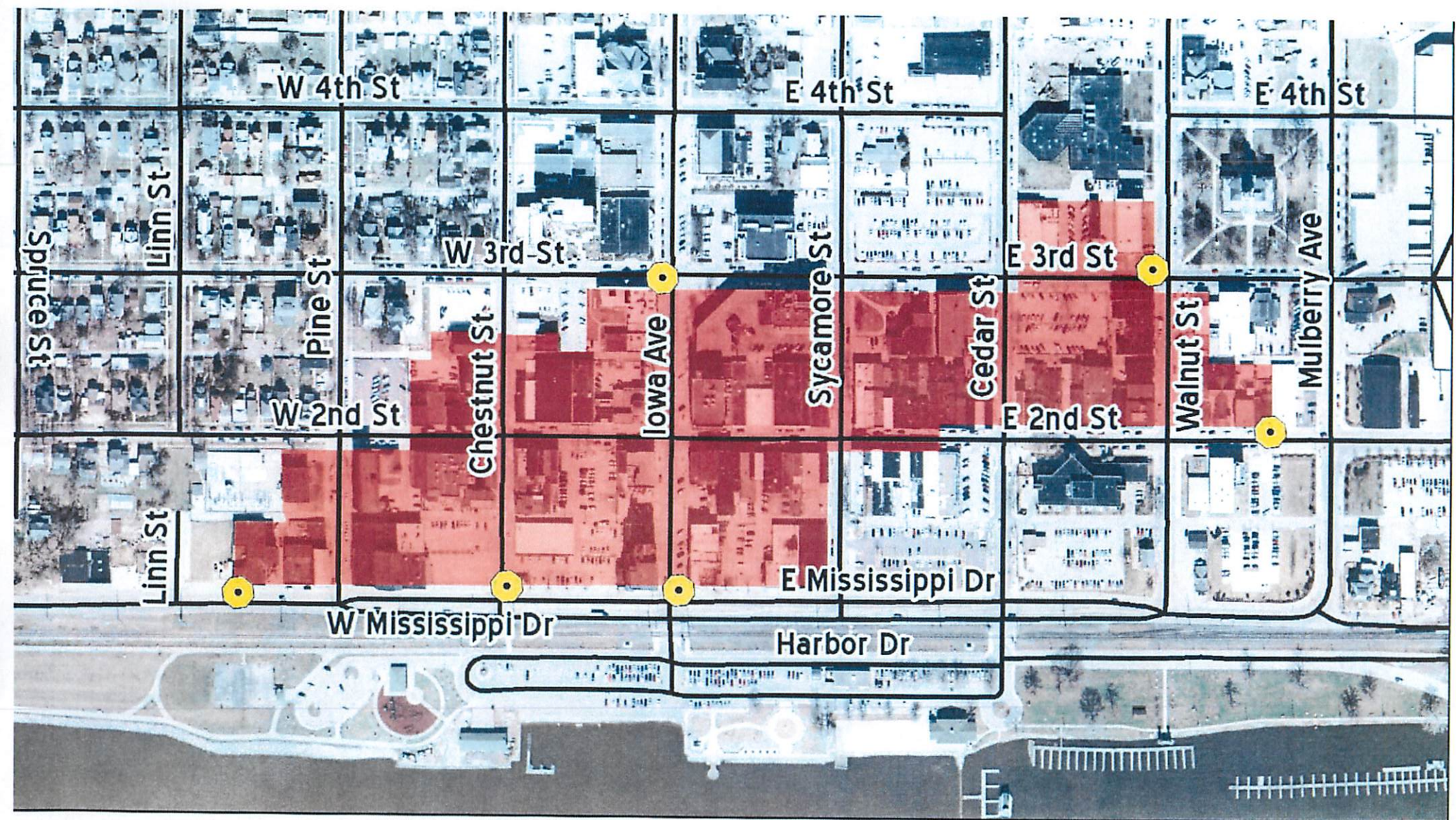
Note: Colors are not exactly representative of the final product. Computer monitors do not match colors exactly from one to the other.



*Signs are manufactured to meet the reflectivity and substrate that each customer is billed for. Occasionally, and especially on smaller sizes, signs will meet or exceed what the customer has ordered in either sheeting or substrate, at no additional cost to the customer. This is done to utilize material in an effort to keep customer costs as low as possible.

Layout Fees may be Applicable.

Property of Iowa Prison Industries
Sign Division, Anamosa, IA.
FOR CUSTOMER REVIEW ONLY
Not to be duplicated or shared without
written permission from the Plant Manager

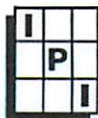


Proposed Sign Locations

0 200 400 800 Feet

Downtown Commercial Historic District





Iowa Prison Industries - Sign Division

9596.12140.1

Company: Muscatine Historic Preservation Commission
Layout Date: 1/23/2012
Designed By: Akbar Choudry
Substrate: K080ALUM
Punch Spec: See Special Notes.

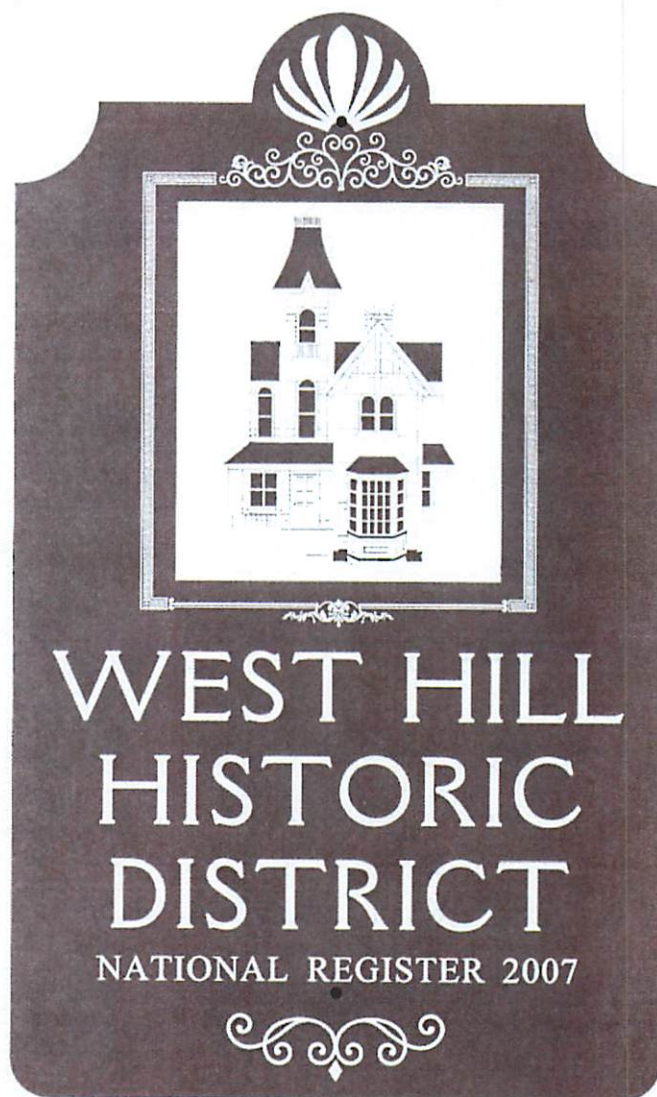
Width: 24"
Height: 40"
Border Width: None
Border Inset: None

Two-Sided: False

Fonts Used: 2-1/2" DellaRobbia BT & 1" Aparajita

Colors Used: White / Brown
Sheeting: KIJWHITEREF, KIJOVERLAMINATE
Special Notes: Pattern Cut.

Note: Colors are not exactly representative of the final product. Computer monitors do not match colors exactly from one to the other.



*Signs are manufactured to meet the reflectivity and substrate that each customer is billed for. Occasionally, and especially on smaller sizes, signs will meet or exceed what the customer has ordered in either sheeting or substrate, at no additional cost to the customer. This is done to utilize material in an effort to keep customer costs as low as possible.

Layout Fees may be Applicable.

Property of Iowa Prison Industries
Sign Division, Anamosa, IA.

FOR CUSTOMER REVIEW ONLY

Not to be duplicated or shared without
written permission from the Plant Manager

