



**Martin & Whitacre
Surveyors & Engineers, Inc.**

Gary Whitacre, President
Matt Krause, Sec/Treas

October 6, 2011

Steve Boka
City of Muscatine
215 Sycamore Street
Muscatine, IA 52761

Dear Steve:

On behalf of Paul & Tammi Drawbaugh, 2004 Crestline Drive, Muscatine, we request to be placed on the agenda for the October 11th Planning & Zoning meeting for the purpose of vacating and platting utility easements on Lots 32, 33, and 34 of Riverbend Second Addition.

Paul & Tammi and Tammi's parents are the buyers of the lots from Central State Bank. They intend to split Lot 33 in order to have larger lots and therefore need to modify the easements as shown.

We will be in contact with the utility companies.

Respectfully submitted,

MARTIN & WHITACRE SURVEYORS & ENGINEERS, INC.

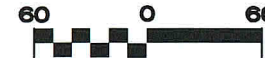
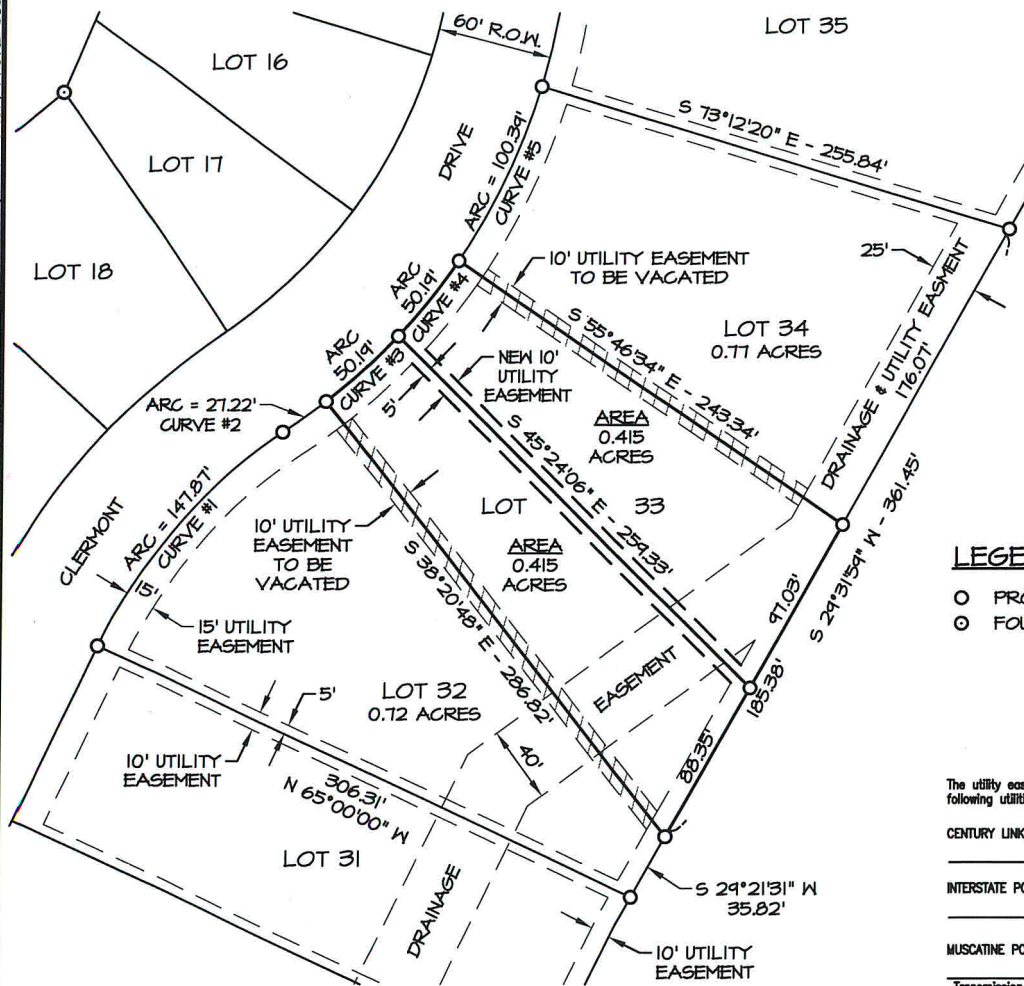
Gary W. Whitacre

GWG/rih

Encl. - Submittal Fee

#7452Cityltr

PREPARED BY: GARY W. WHITACRE, MARTIN & WHITACRE SURVEYORS & ENGINEERS, INC., P.O. BOX 413, MUSCATINE, IOWA 52761 / PHONE: 563-263-7691



BASIS OF BEARINGS
IOWA STATE PLANE COORDINATE SYSTEM
SOUTH ZONE

LEGEND

- PROPERTY CORNER
- FOUND REBAR WITH CAP

The utility easements as shown are acceptable to the following utilities:

CENTURY LINK, LC

INTERSTATE POWER AND LIGHT, AN ALLIANT ENERGY COMPANY

MUSCATINE POWER & WATER

Transmission & Distribution

Water Production & Distribution

Communications

| CURVE DATA | | | | | |
|------------|-----------|---------|---------|---------------|---------|
| CURVE | DELTA | RADIUS | ARC | BEARING | CHORD |
| #1 | 31°22'46" | 270.00' | 147.87' | N 40°41'23" E | 146.03' |
| #2 | 04°43'34" | 330.00' | 27.22' | N 54°00'54" E | 27.21' |
| #3 | 08°42'53" | 330.00' | 50.19' | N 47°17'45" E | 50.15' |
| #4 | 08°42'53" | 330.00' | 50.19' | N 38°34'52" E | 50.15' |
| #5 | 17°25'46" | 330.00' | 100.39' | N 25°30'33" E | 100.00' |

PROPRIETOR: CENTRAL STATE BANK

I hereby certify that this land surveying document was prepared and the related survey work was performed by me or under my direct personal supervision and that I am a duly Licensed Land Surveyor under the laws of the State of Iowa.

Gary W. Whitacre

Date _____ Reg. No. 10316

My license renewal date is December 31, 2011

Pages or sheets covered by this seal: 1



Martin & Whitacre Surveyors & Engineers, Inc.

P.O. BOX 413 (563)263-7691 MUSCATINE, IOWA

PAUL & TAMMI DRAWBAUGH PLAT OF SURVEY
LOTS 32, 33 & 34 RIVERBEND SECOND ADDITION, MUSCATINE, IOWA

| FILE | BOOK | SCALE | DRN | CHK'D | DATE | JOB NO. |
|-----------|------|--------|-----|-------|---------|---------|
| RIVERBEND | --- | 1"=60' | PM | GWW | 10/5/11 | 7452.11 |
| REV. | 0 | | | | | |

7452 SURVEY.DWG SHEET 1 OF 1